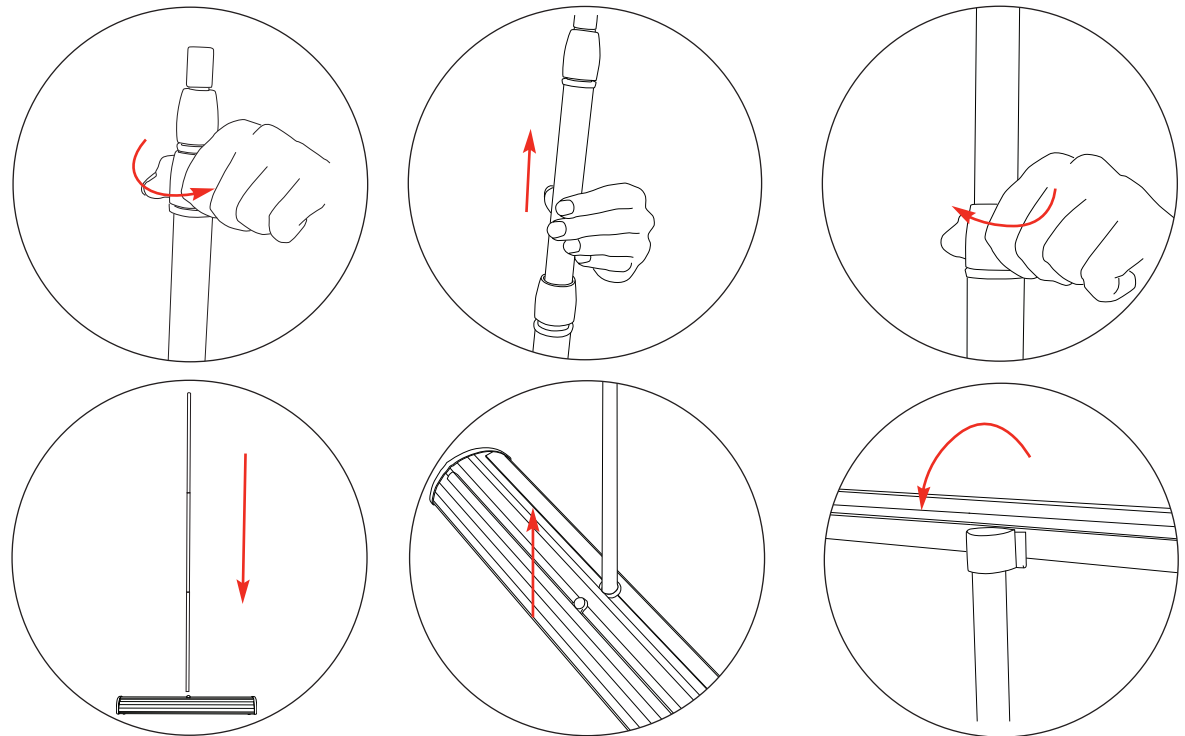




Recommened Graphic Thickness: 225-450microns
Total Visual Graphic Area: 800x2130mm
Total Visual Graphic Area: 1000x2130mm

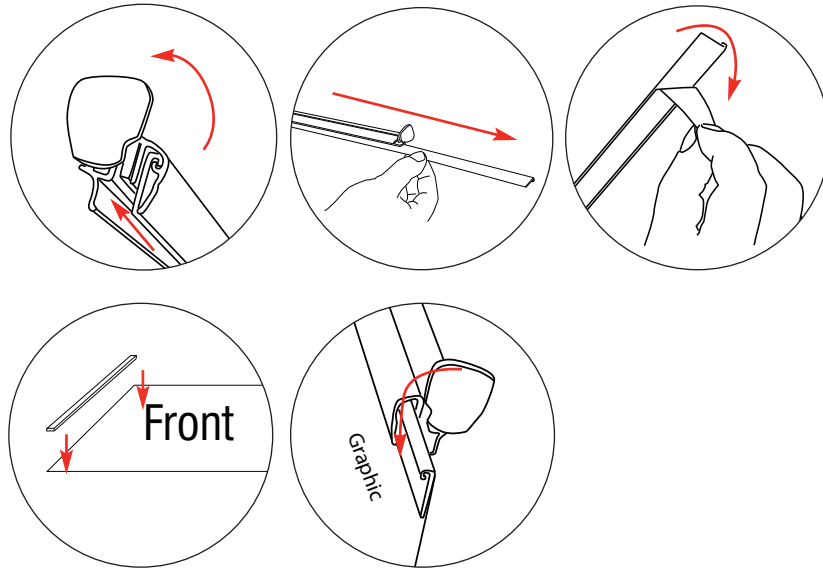
Include a 150mm at the bottom(non-visible area in roller mechanism)

Assembly

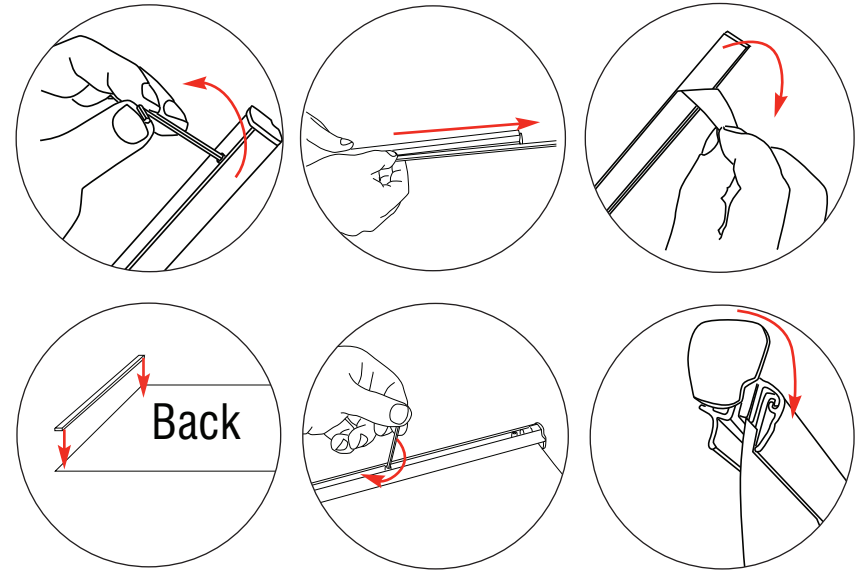


Top Rail Attachment

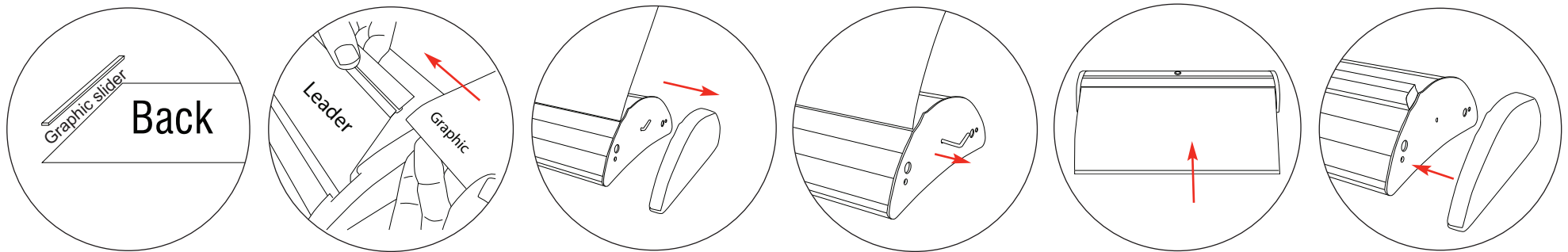
Option 1 (Adhesive Rail Option)



Option 2 (Clamp Rail Option)



Bottom Graphic Attachment



WARNING: Banner is pre-tensioned always attach graphic to Leader and top rail before removing the locking pin.